

# BRECO® PinLock

Precise. Secure. Easy to assemble.

## BRECO® PinLock:

- A maximum-precision timing belt connection
- High level of flexibility and running smoothness
- A highly precise and ultra-straight bore path for connection pins
- Option to be assembled/ disassembled several times
- Simple on-site assembly

## BRECO® PinLock

The BRECO® PinLock is a simple and fast-assembly timing belt connection that demonstrates high-quality workmanship and outstanding running properties even at first glance. The optimised finger shape ensures equal load distribution in every cross section, thereby allowing for a high load-bearing capacity of the connection. The precise water-jet-cut finger contours guarantee both ends of the belt can be easily joined during on-site assembly and ensure quiet, conformal running.

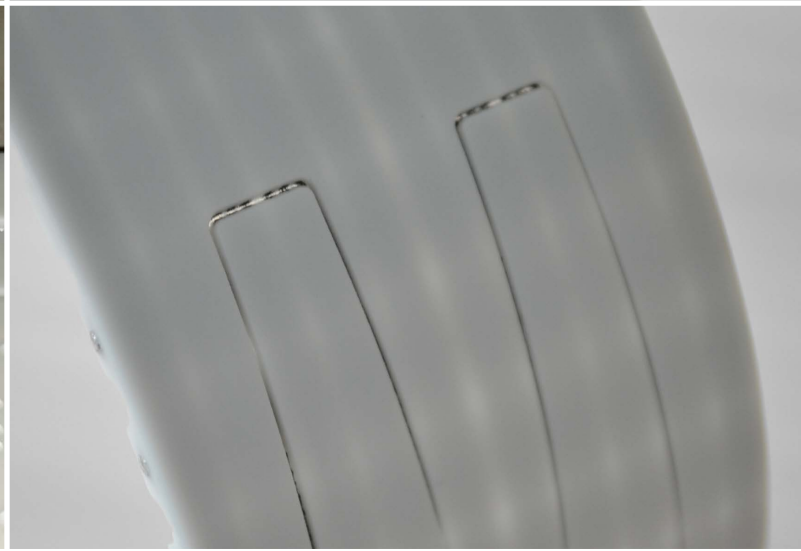
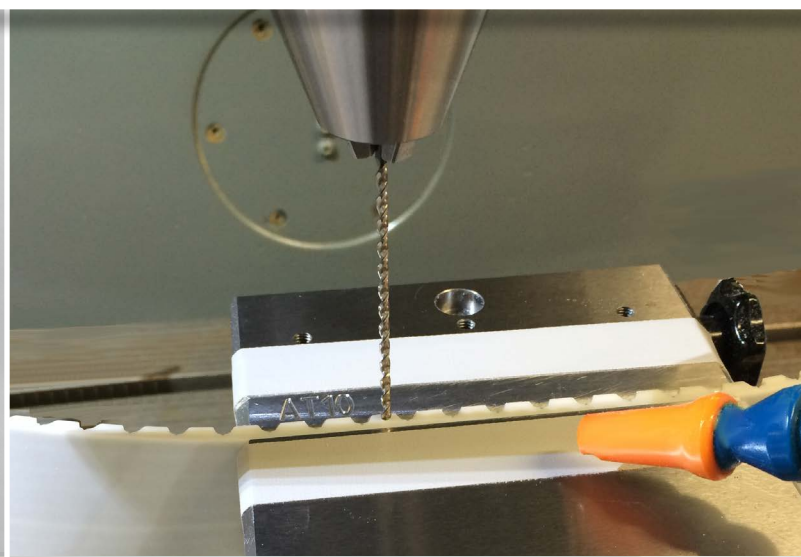
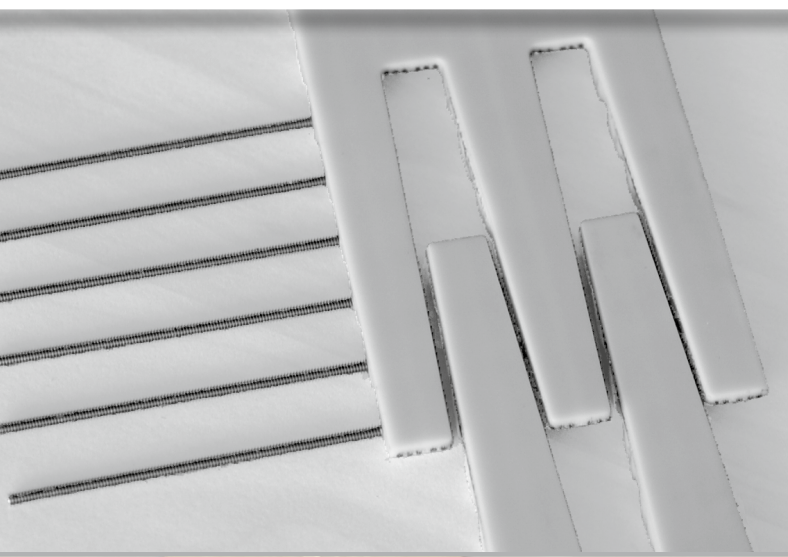
The CNC-milled bore paths are ultra-straight and the rust-proof threaded pins are tightened using a cordless screwdriver, which makes assembly extremely simple. The BRECO® PinLock is a secure timing belt connection that can be used several times and is also suitable for coated timing belts and timing belts with welded-on profiles.



BRECO is a member of Mulco Europe EWIV



# BRECO® PinLock – Precise. Secure. Easy to assemble.



## BRECO®-PinLock

Available belt types and widths / permissible tensile forces							
Belt width		[mm]	25	32	50	75	96 (only T10/AT10) / 100
T10	PinLock6	[N]	-	-	-	-	-
	PinLock10	[N]	300	400	600	900	1200
AT10	PinLock6	[N]	200	300	400	600	800
	PinLock10	[N]	400	500	800	1200	1600
T20	PinLock6	[N]	400	500	800	1200	1600
	PinLock10	[N]	700	900	1500	220	3000
AT20	PinLock6	[N]	500	600	1000	1500	2000
	PinLock10	[N]	1000	1200	2000	3000	4000

PinLock 6/10: Lock with 6 alt. 10 bores for threaded pins.

The BRECO distribution partner responsible for you will be happy to provide further information.